

FOR LEASE

DAVIE INDUSTRIAL CENTER

INFILL HEAVY INDUSTRIAL BUILD-TO-SUIT SITE

3055 BURRIS ROAD • DAVIE, FL 33314

CBRE



Conceptual rendering only.

CONTACT US

LARRY GENET

EXECUTIVE VICE PRESIDENT
C 786.496.0440
E LARRY.GENET@CBRE.COM

TOM O'LOUGHLIN

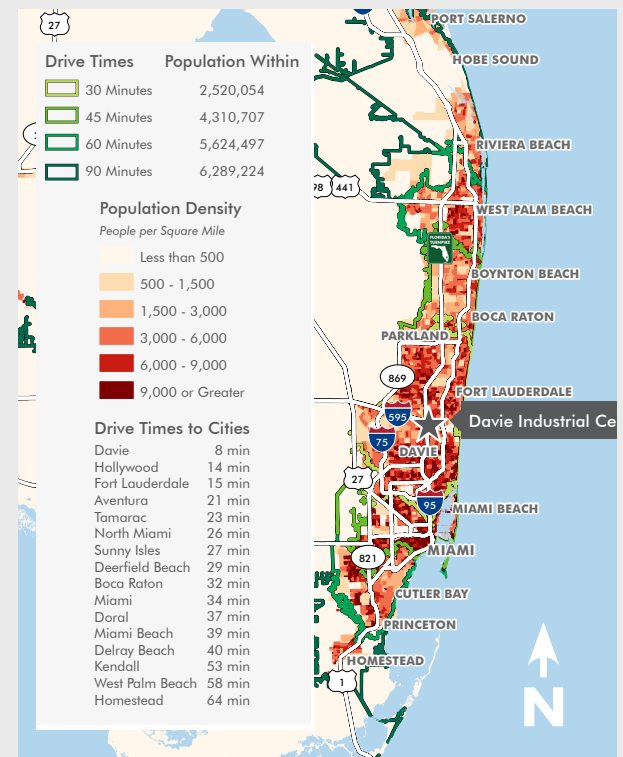
EXECUTIVE VICE PRESIDENT
C 954.817.3919
E TOM.OLOUGHLIN@CBRE.COM



PROPERTY HIGHLIGHTS

On behalf of the Owner, CBRE, as exclusive marketing advisor, is pleased to offer a ± 38.51 acre low coverage industrial development site located in Broward County, Florida. The property is ideally located between I-95 and the Florida Turnpike just south of I-595 with immediate access to all major highways. This ± 38.51 acre site can accommodate a single or multi-tenant industrial development from $\pm 50,000$ SF up to $\pm 400,000$ SF. The site is currently designed with the e-commerce center last-mile facility scenario as depicted in this brochure.

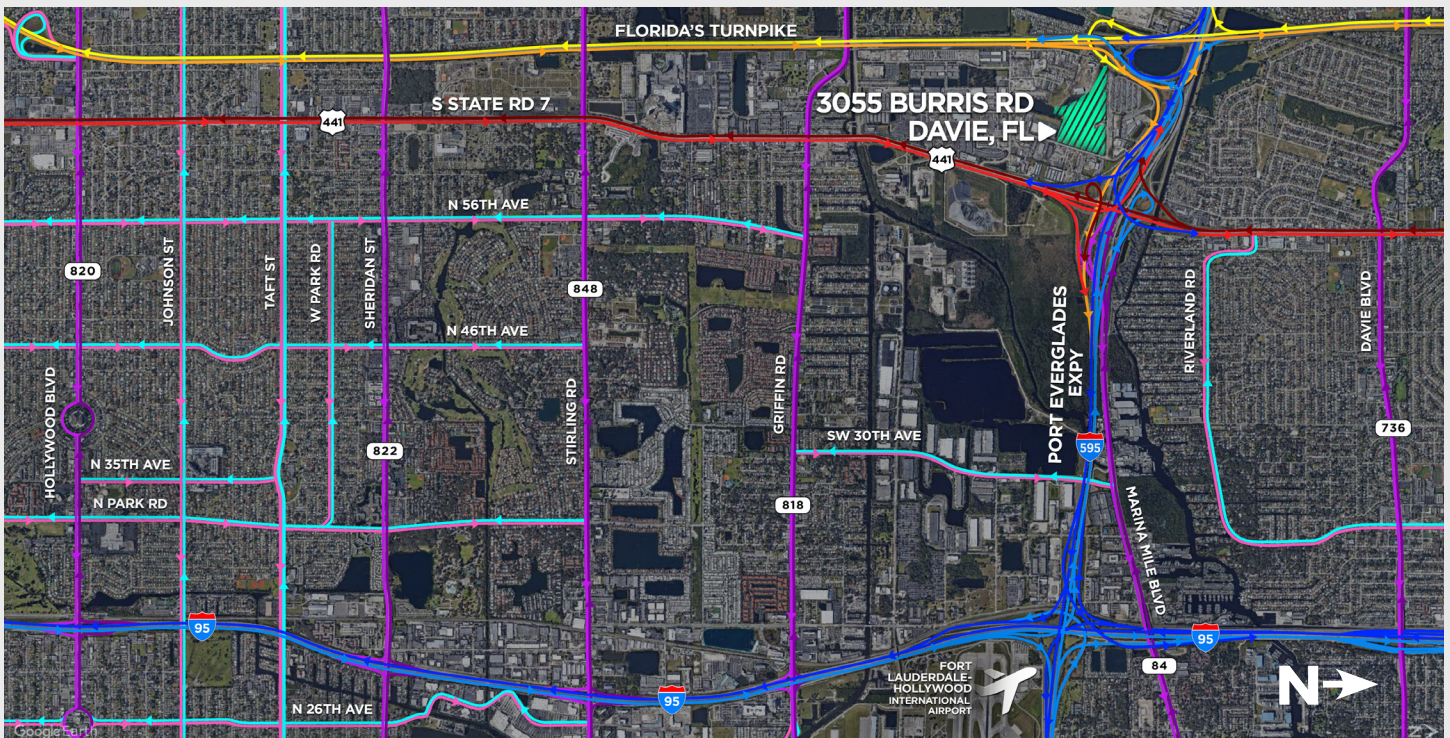
- ± 38.51 Acres for Lease
- Area tenants include Pepsi, Clorox, Shipmonk, XPO, Publix, Old Dominion and major e-commerce companies
- Site can accommodate an e-commerce, distribution, corporate headquarters or manufacturing operation with heavy parking requirements
- Please Inquire for Lease Rate or build-to-suit opportunities



DETAILS

PROPERTY ADDRESS	3055 Burriss Road, Davie, FL 33314
LOT SIZE	± 38.51 acres
ZONING	M-4, Town of Davie

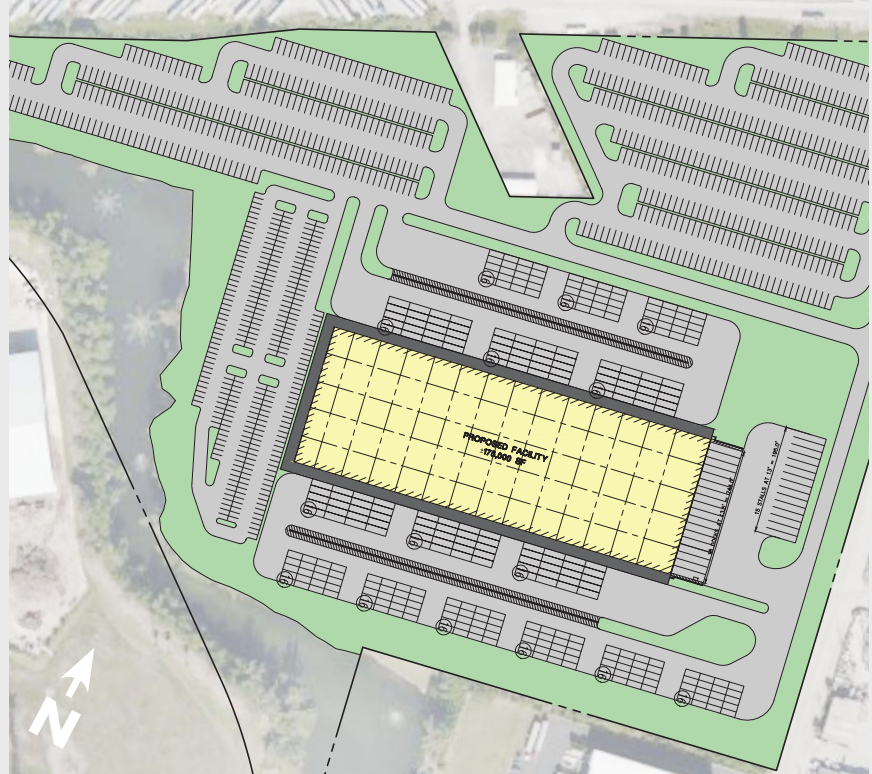
LOCAL AREA ACCESS



CONCEPTUAL SITE PLANS



Building Size: $\pm 175,000$ SF
 Gross Area: ± 38.51 acres
 Spec Office: TBD
 Clear Height: TBD
 Exterior Loading: cross dock
 Trailer Parking: 33 spaces
 Van Parking: 677 spaces
 Car Parking: 194 spaces



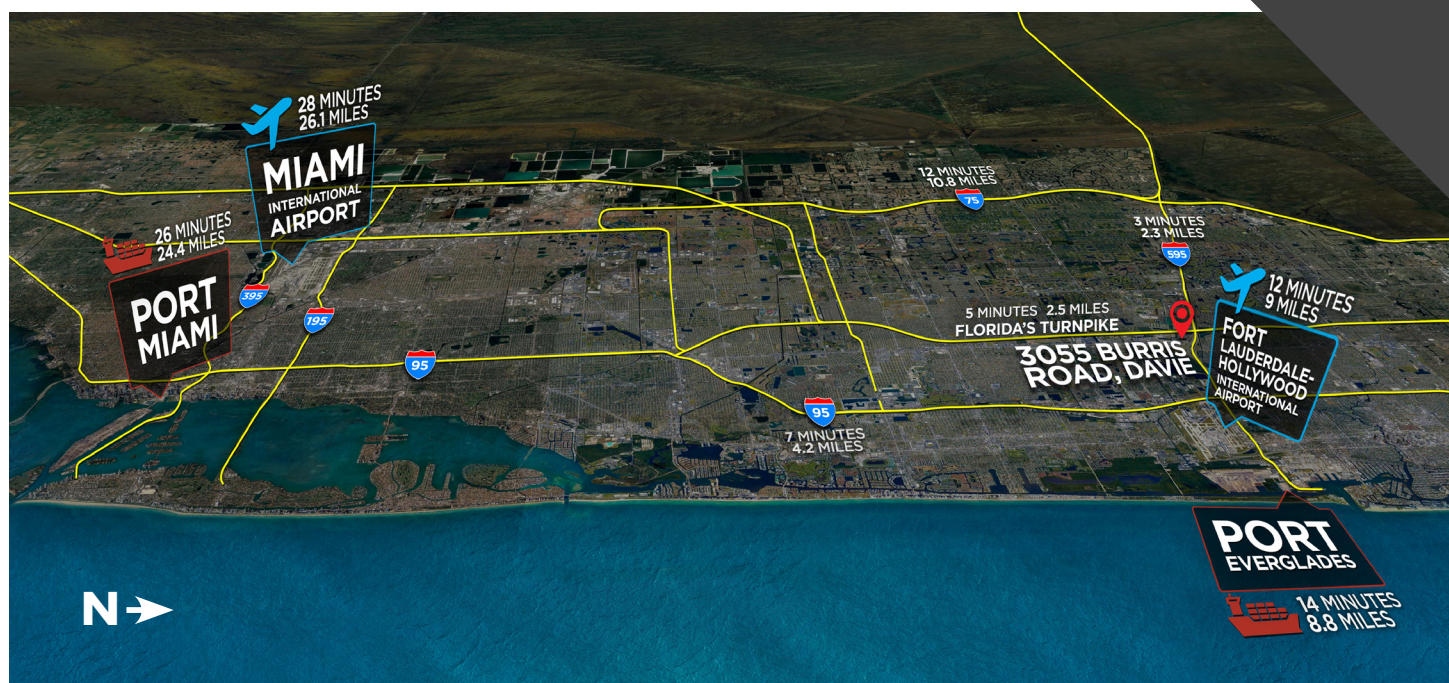
BUILD-TO-SUIT OPPORTUNITIES



HIGHLIGHTS

- » Tremendous parking capabilities
- » Low coverage industrial development
- » LED lighting
- » Clerestory windows in warehouse
- » Fully secured site
- » Campus like environment
- » Build-to-suit opportunity
- » Single or two-tenant project
- » Incredible highway accessibility

ACCESS AERIAL



HUBZONE MAP

Davie Industrial Center Development Site is within a qualified HUBZone.

