

Central Broward Commerce Park

3,200 - 6,700 SF Available

3691-3698 NW 16th Street
Lauderhill, FL 33311

High Quality Small Bay Industrial Product



Contact Us

Michael Oretsky
Senior Associate
+1 954 798 4284
michael.oretzky@cbre.com

Tom O'Loughlin
Executive Vice President
+1 954 356 0468
tom.oloughlin@cbre.com

Larry Genet
Executive Vice President
+1 305 807 0004
larry.genet@cbre.com

Owned by:

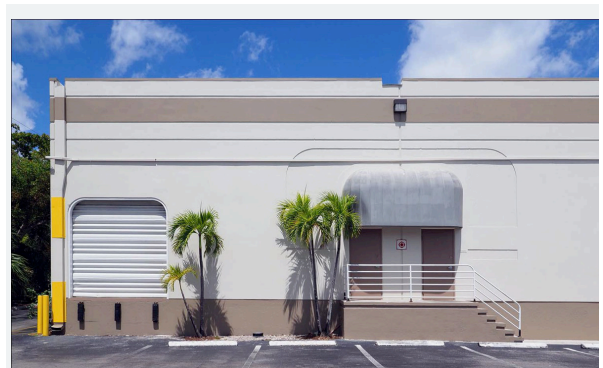


Property Features

- + ±3,200 - 6,700 SF Available
- + ±22' clear height
- + 3 phase electric
- + Flow through loading, offering both dock and grade level accommodations.
- + Centrally located and easily accessible
- + **Lease Rate: \$17.00 PSF NNN Plus \$5.21 OPEX**

Available Space

Suite	Total SF	Office SF	Loading	Floor Plan	Date Available
3698 F	3,200 SF	720 SF	1 dock high door & 1 grade level door	Click here for floor plan	Immediately
3698 G	3,200 SF	20%	1 dock high door & 1 grade level door	Click here for floor plan	7/1/2022
3691 - 3693	5,628 SF	20%	1 dock high door & 1 grade level door	Click here for floor plan	7/1/2022
3698 B	6,700 SF	900 SF	2 dock high doors & 2 grade level doors	Click here for floor plan	7/1/2022



Contact Us

Michael Oretsky
Senior Associate
+1 954 798 4284
michael.oretzky@cbre.com

Tom O'Loughlin
Executive Vice President
+1 954 356 0468
tom.oloughlin@cbre.com

Larry Genet
Executive Vice President
+1 305 807 0004
larry.genet@cbre.com

© 2022 CBRE, Inc. All rights reserved. This information has been obtained from sources believed reliable, but has not been verified for accuracy or completeness. You should conduct a careful, independent investigation of the property and verify all information. Any reliance on this information is solely at your own risk. CBRE and the CBRE logo are service marks of CBRE, Inc. All other marks displayed on this document are the property of their respective owners, and the use of such logos does not imply any affiliation with or endorsement of CBRE. Photos herein are the property of their respective owners. Use of these images without the express written consent of the owner is prohibited.