

Hollywood Headquarter Facility

2033-2035 Thomas Street
Hollywood, FL 33020



Property Description

This unique two story executive style headquarter facility consists of $\pm 15,180$ total square feet and is situated on $\pm 32,198$ SF or $\pm .74$ acres of land. The rear of the building is serviced via oversized drive-in loading doors. The building features 16' clear height with a Twin T Roof and is 100% air conditioned. The property has ± 40 parking spaces. The office area is split between two floors and totals $\pm 6,072$ SF. The building has been recently renovated and is currently zoned DH-3 City of Hollywood which is a Dixie Highway High Intensity Mixed-Use District allowing for a myriad of uses including industrial warehousing, manufacturing and office administrative uses.

Contact Us

Larry Genet

Executive Vice President

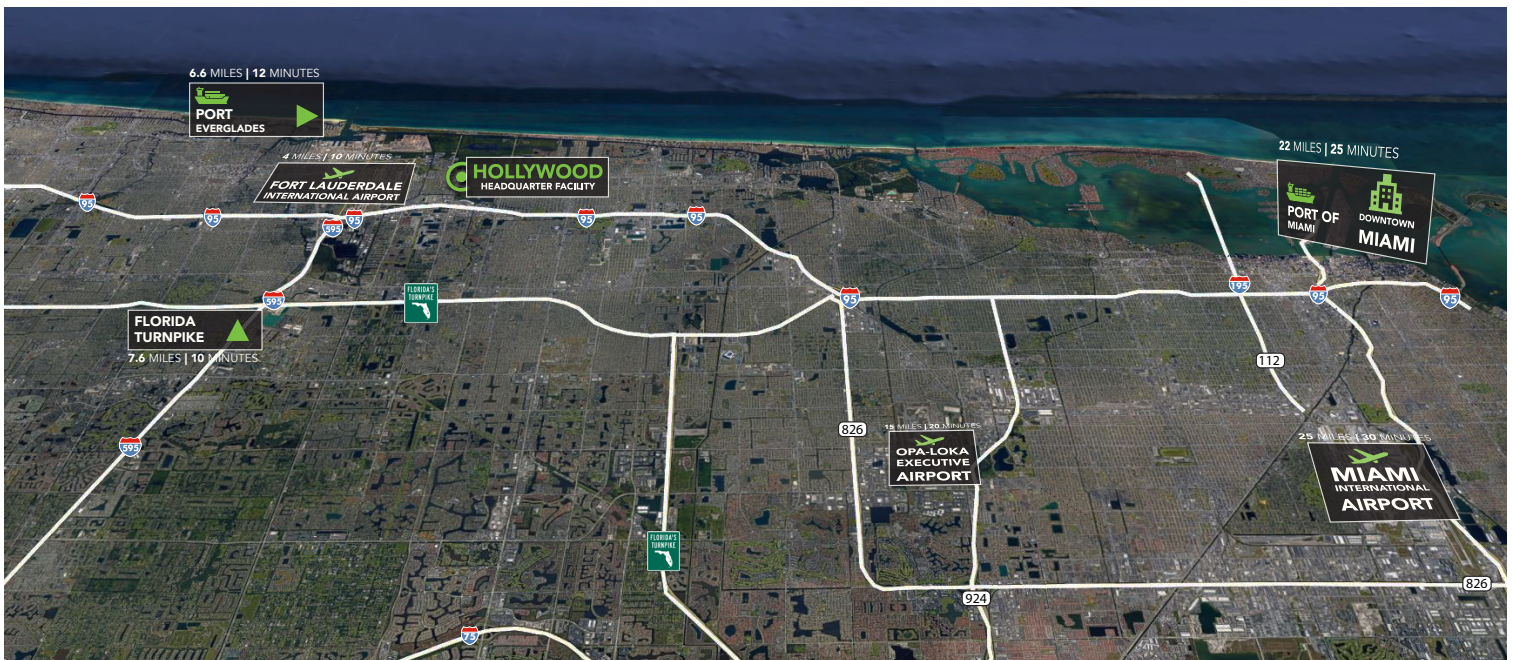
+1 786 496 0440

larry.genet@cbre.com



Highlights

- + ±15,180 SF building on ±.74 acres available for sale
- + ±6,072 SF of office on two floors
- + ±16' clear height
- + Zoned DH-3, City of Hollywood
- + Built in 1983, recently renovated
- + Delivered vacant
- + ±40 parking spaces and side yard zoned for outside storage
- + Twin-T Roof
- + 100% Air conditioned
- + Asking Price: \$4,650,000



© 2022 CBRE, Inc. All rights reserved. This information has been obtained from sources believed reliable, but has not been verified for accuracy or completeness. You should conduct a careful, independent investigation of the property and verify all information. Any reliance on this information is solely at your own risk. CBRE and the CBRE logo are service marks of CBRE, Inc. All other marks displayed on this document are the property of their respective owners, and the use of such logos does not imply any affiliation with or endorsement of CBRE. Photos herein are the property of their respective owners. Use of these images without the express written consent of the owner is prohibited.